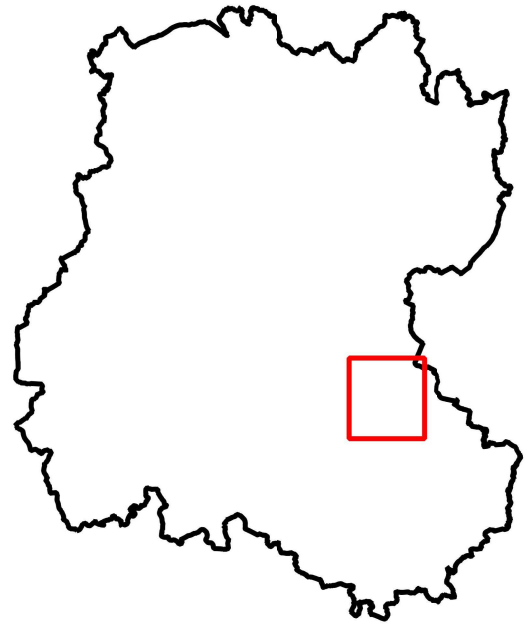


EARL DE MERY

LOCALISATION DES PARCELLES



0 20 40 km

Légende :

 SCA DU MONT MEAN



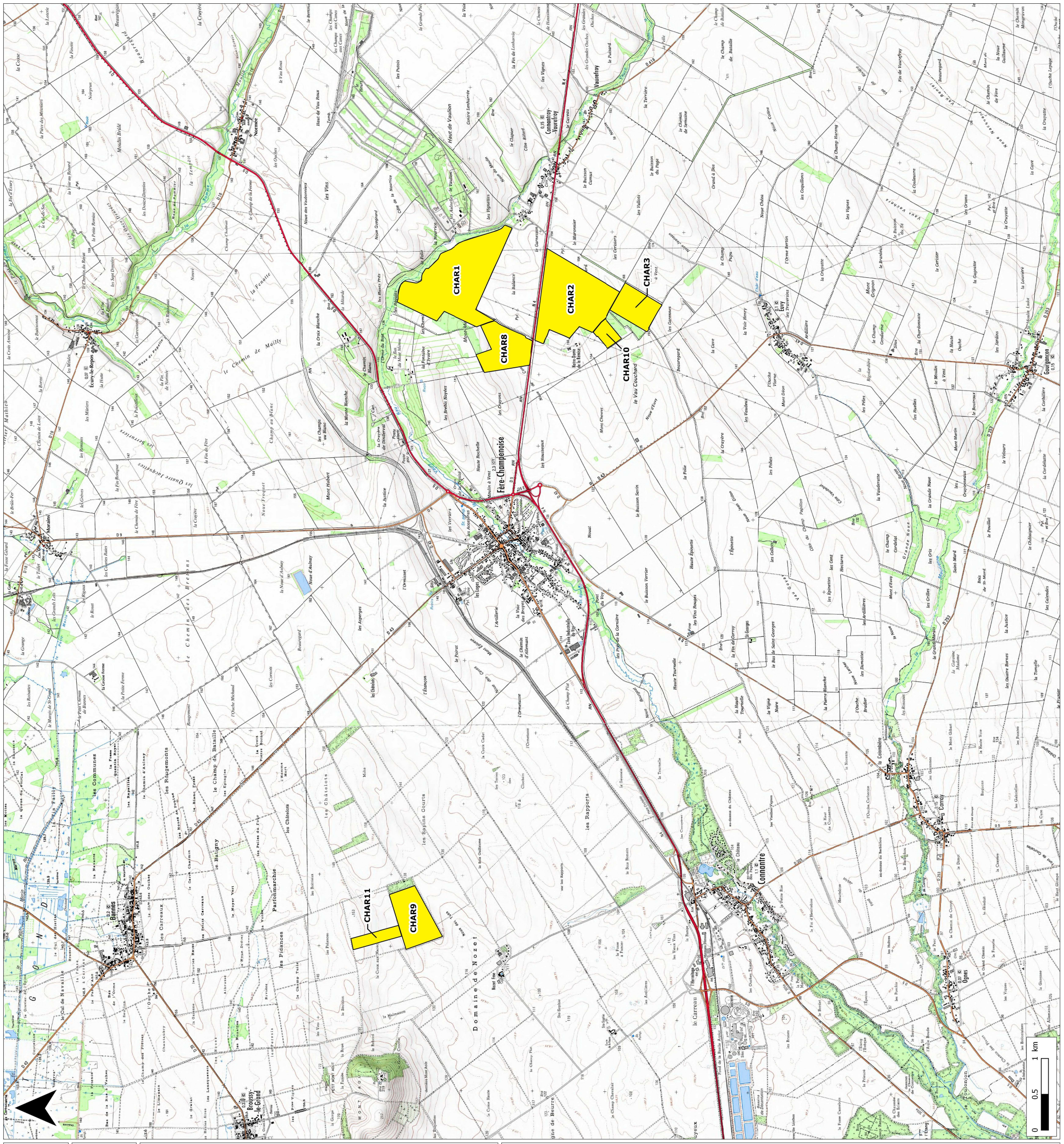
Source : IGN Scan 25 2013

Dossier : S:\Cartes MapInfo\Etude
collaborateurs\Etude

François\earl_de_mery\earl_de_mery2.qgs

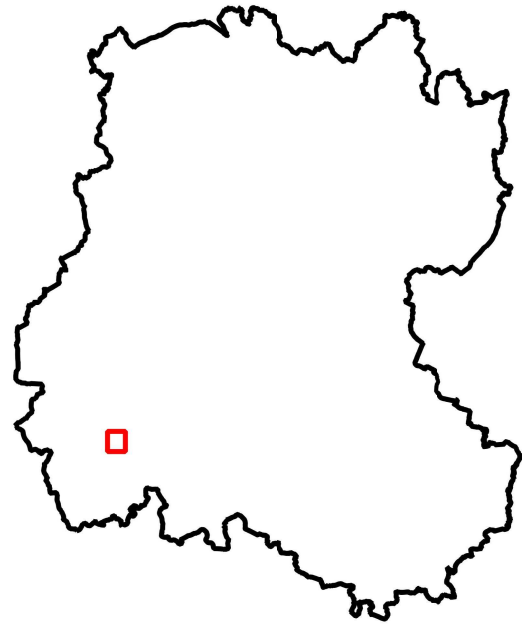
Réfèrent : brissonj51d

Date : 09.06.2020




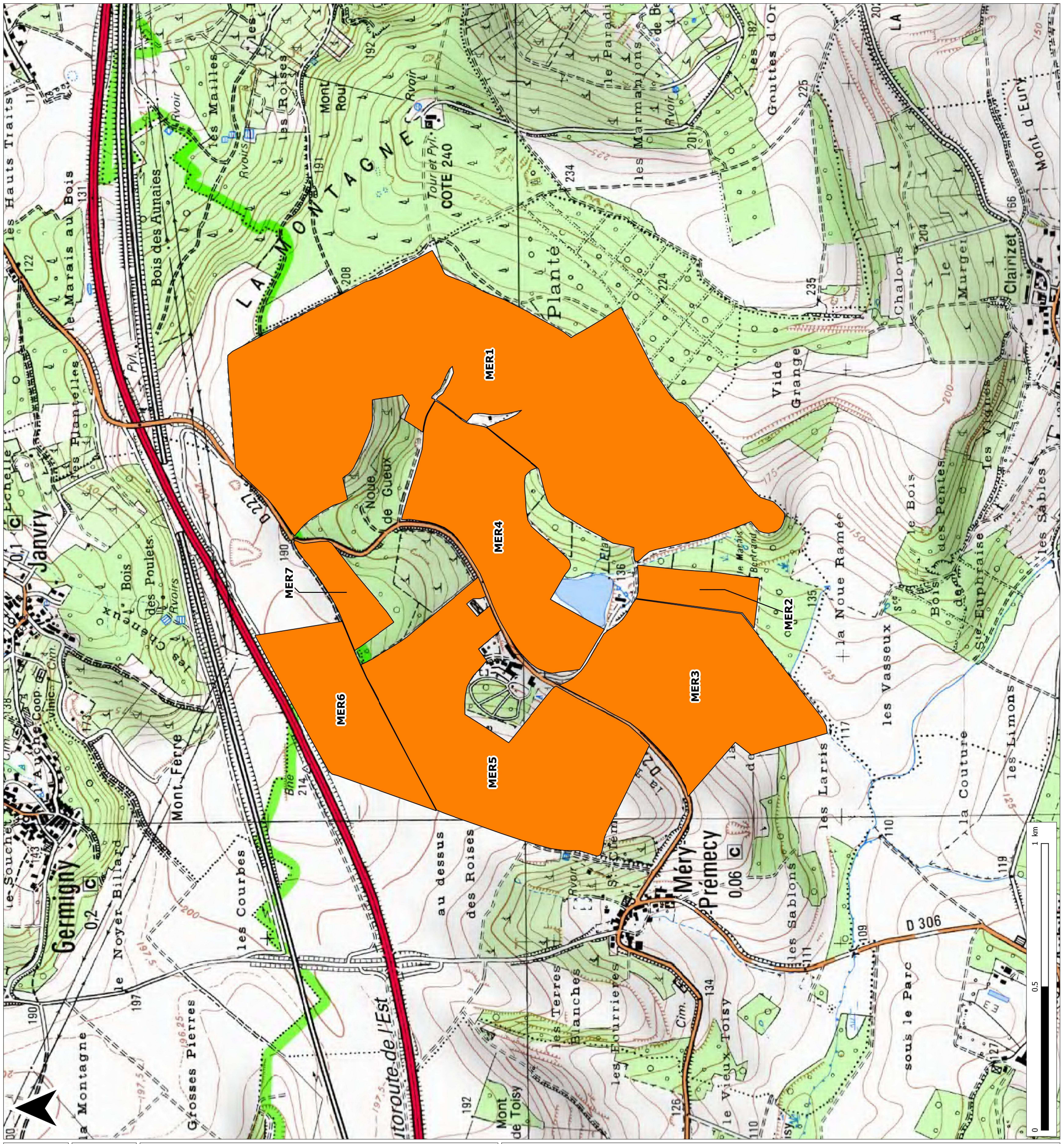
EARL DE MERY

LOCALISATION DES PARCELLES



Légende :

 EARL DE MERY



Source : IGN Scan 25 2013

Dossier : S:\Cartes MapInfo\Etude
collaborateurs\Etude

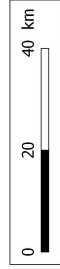
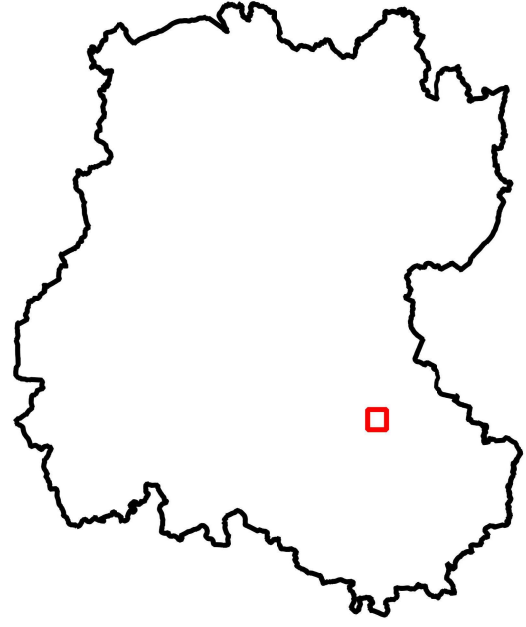
François\earl_de_mery\earl_de_mery2.ggs

Réfèrent : brissonj51d

Date : 09.06.2020

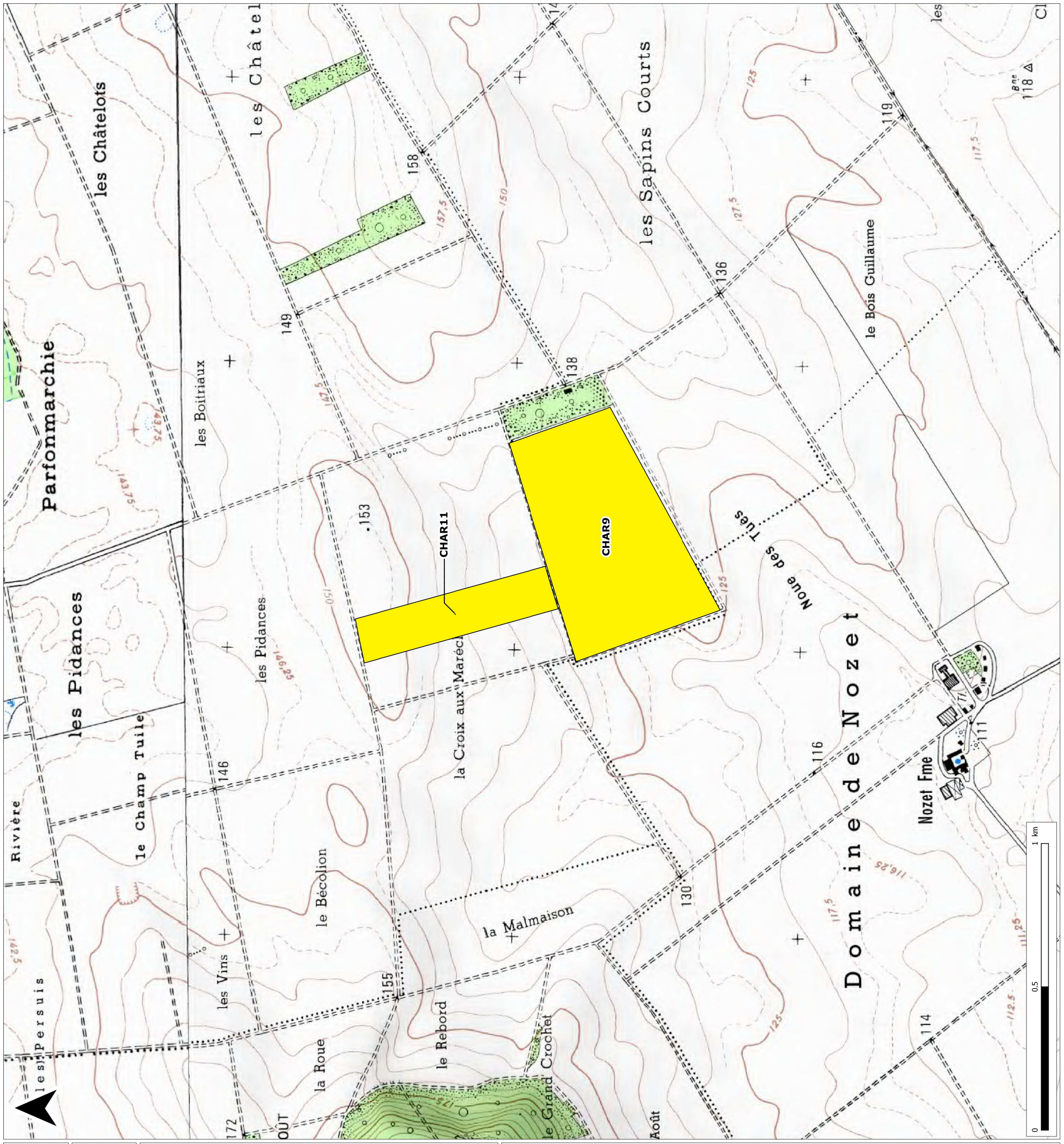
EARL DE MERY

LOCALISATION DES PARCELLES



Légende :

 SCEA DU MONT MEAN



Source : IGN Scan 25 2013

Dossier : S:\Cartes MapInfo\Etude
collaborateurs\Etude

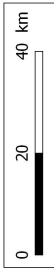
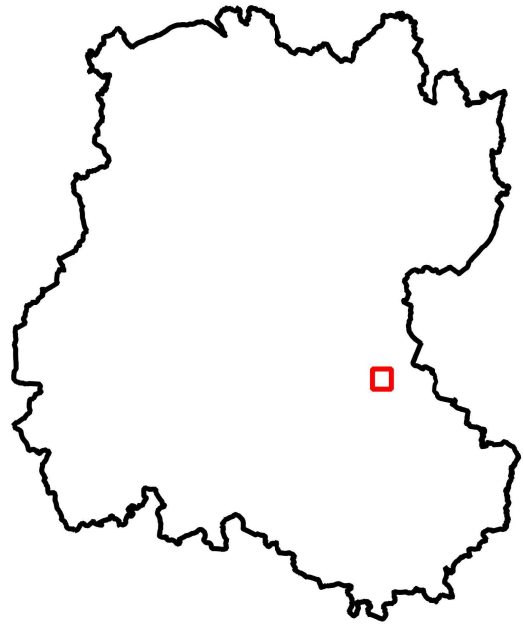
François\earl_de_mery\earl_de_mery2.qgs

Réfèrent : brissonj51d

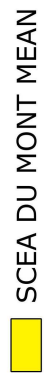
Date : 09.06.2020

EARL DE MERY

LOCALISATION DES PARCELLES



Légende :



SCEA DU MONT MEAN



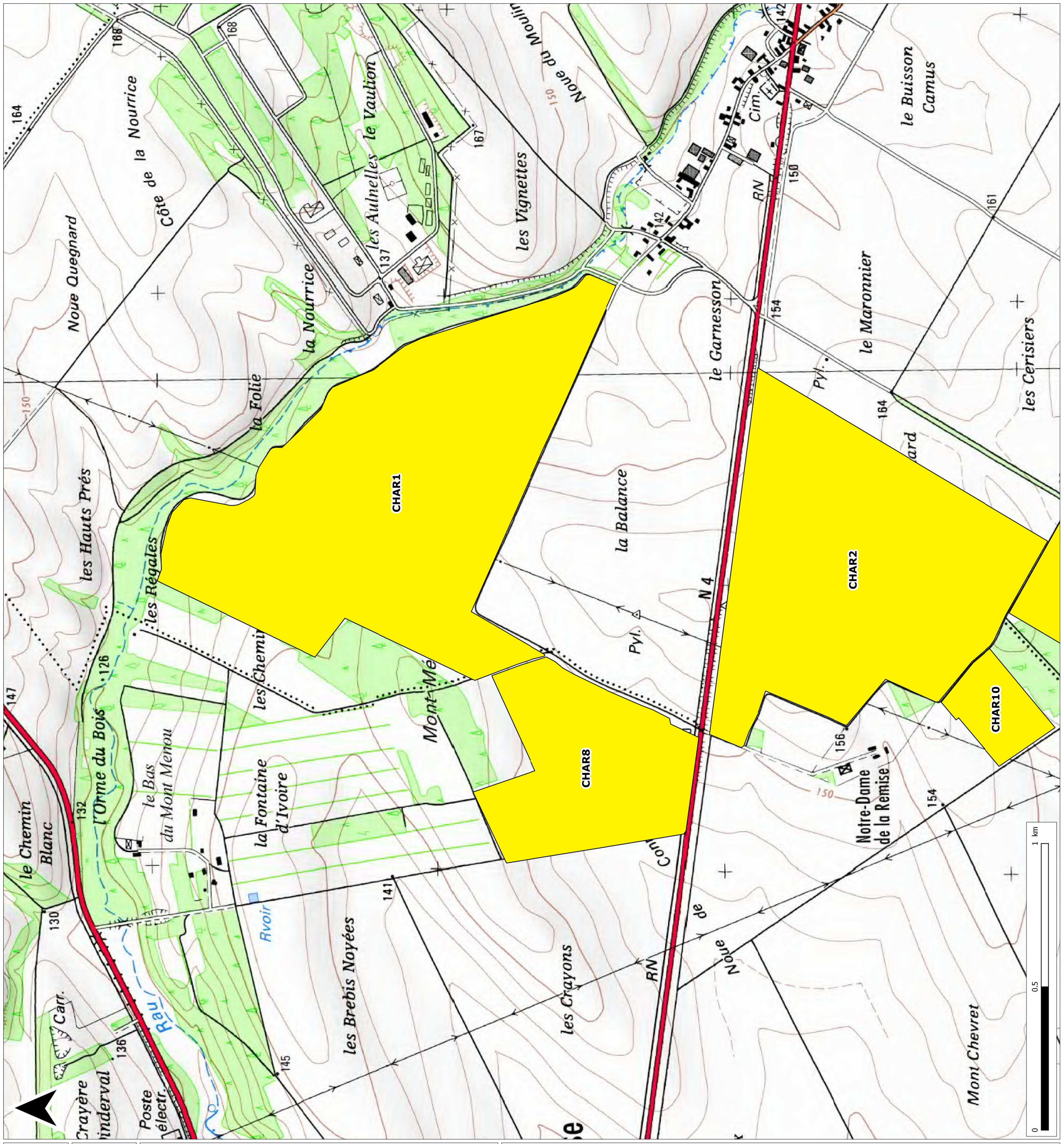
Source : IGN Scan 25 2013

Dossier : S:\Cartes MapInfo\Etude
collaborateurs\Etude

François\earl_de_mery\earl_de_mery2.qgs

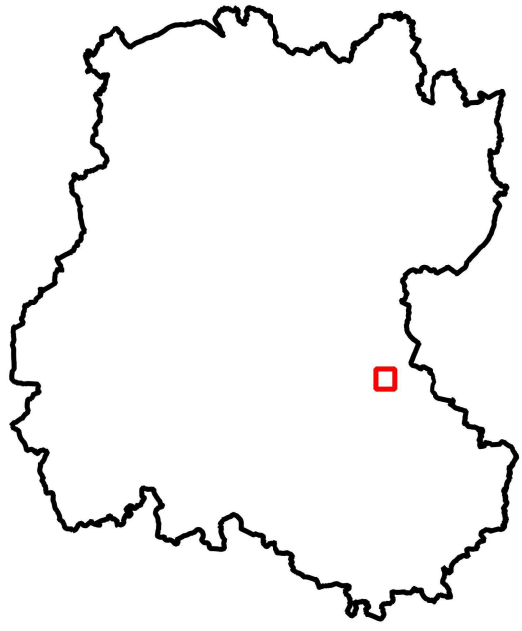
Référent : brissonj51d

Date : 09.06.2020

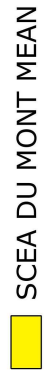


EARL DE MERY

LOCALISATION DES PARCELLES



Légende :



Source : IGN Scan 25 2013

Dossier : S:\Cartes MapInfo\Etude
collaborateurs\Etude

François\earl_de_mery\earl_de_mery2.qgs

Référent : brissonj51d

Date : 09.06.2020

